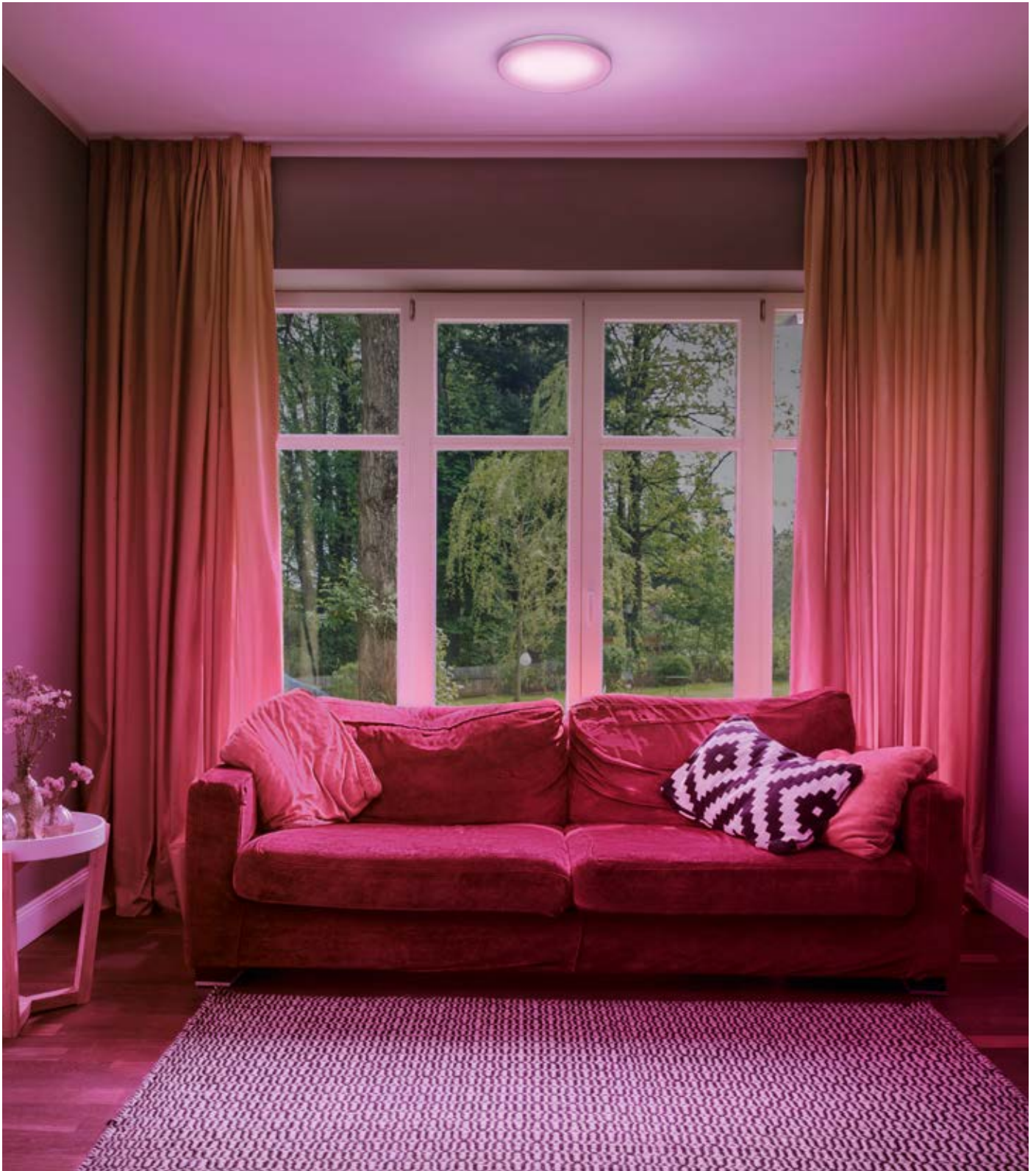


SMART⁺ WIFI PLANON™ FRAMELESS ROUND

ROUND WALL AND CEILING LUMINAIRES IN FRAMELESS DESIGNS –
WITH TUNABLE WHITE OR TUNABLE WHITE AND RGB FUNCTION





1
SMART+ WIFI PLANON
450



2
SMART+ WIFI PLANON
300



Product name	GTIN (EAN)	No.	COLOR	MATERIAL	t[h] ²	W	lm	Energy efficiency class ³	K
--------------	------------	-----	-------	----------	-------------------	---	----	--------------------------------------	---

SMART+ WIFI PLANON FRAMELESS TW 450	4058075484719	1	White	Aluminum	25000	28.00	2700	A++/A+/A	3000...6500
SMART+ WIFI PLANON FRAMELESS TW RGB 300**	4058075484696	2	White	Aluminum	25000	20.00	1600	A++/A+/A	RGB, 3000...6500
SMART+ WIFI PLANON FRAMELESS TW 300	4058075484672	2	White	Aluminum	25000	20.00	1700	A++/A+/A	3000...6500

Product name	CRI	°	IP	h [mm]	d [mm]	Weight
--------------	-----	---	----	--------	--------	--------

SMART+ WIFI PLANON FRAMELESS TW 450	>80	110	IP20	15000	65.0	450.0	5
SMART+ WIFI PLANON FRAMELESS TW RGB 300**	>80	110	IP20	15000	69.0	300.0	5
SMART+ WIFI PLANON FRAMELESS TW 300	>80	110	IP20	15000	65.0	300.0	5

* Works with LEDVANCE WIFI Remote Control. For further information, please see page 368. | ¹ The exact terms and conditions can be found at www.ledvance.com/consumer/services/guarantee | ² Average lifetime in hours | ³ Energy efficiency grade of the permanently integrated, non-exchangeable LED modules. Energy efficiency index (EEI) on a scale of A++ (highest efficiency) to E (lowest efficiency).