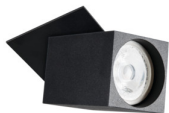


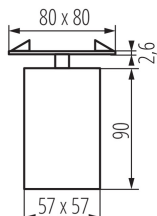
## 29313 CHIRO GU10 DTL-B

Ceiling-mounted spotlight fitting

5905339293138



Ø 70



Kanlux CHIRO GU10, is a completely new category of decorative lighting. It is the ceiling-mounted lamp which can be mounted in a suspended ceiling just like an typical spotlight fitting. Unique design and assembly of this lamp are its largest assets.

### GENERAL DATA:

**Colour:** black

**Necessity of using self-shielding lamps:** yes

**Place of assembly:** Recessed mount in the ceiling

**Place of application:** Indoors

**Minimum distance from the illuminated object:** 0,5m

**The product is not suitable to be covered with a heat-insulating material:** yes

**Light source included:** no

**Assembly hole [mm]:** Ø70

### TECHNICAL DATA:

**Rated voltage [V]:** 220-240 AC

**Rated frequency [Hz]:** 50

**Maximum power [W]:** max 35

**Class of protection against electric shock:** I

**Light source:** PAR16

**Cap:** GU10

**Ambient temperature range to which the product can be exposed:** 5÷25

**Enclosure material:** aluminum alloy

**Connection type:** Bolt terminal block

**Range of sections of wires used [mm²]:** 0,75-1,5

**The fixture is movable horizontally [°]:** 340

**Lighting-fixture angle regulation:** in one axis

**Lighting-fixture angle regulation [°]:** 90

**IP class:** 20

### LOGISTIC DATA:

**Unit of measurement:** unit

**Packaging method:** 20

**Number of units in the secondary packaging:** 1

**Number of units in the packaging:** 20

**Number of units per layer on a pallet:** 140

**Net unit weight [g]:** 400

**Grammage [g]:** 497.5

**Length of a unit pack [cm]:** 10

**Width of a unit pack [cm]:** 8.5

**Height of a unit pack [cm]:** 15

**Weight of a cardboard box [kg]:** 9.95

## 29313 CHIRO GU10 DTL-B

Ceiling-mounted spotlight fitting



**Width of a cardboard box [cm]:** 21

**Height of a cardboard box [cm]:** 32.5

**Length of a cardboard box [cm] :** 44.5

**Volume of a cardboard box [m<sup>3</sup>]:** 0.030371