

# PRODUCT DATASHEET

## LN COMP SWITCH 300 4 W 4000 K

LINEAR COMPACT SWITCH | Compact single or light line luminaire with switch



### Areas of application

- Direct replacement for luminaires with fluorescent lamps
- Indoor applications
- Corridors, entrance areas, stairwells, living rooms, basements
- Accent lighting
- Public areas
- Cove lighting
- Shelves, furniture integration or under cabinet mounting
- Seamless linear lighting

### Product benefits

- Compact dimensions
- Little space required thanks to compact dimensions
- Seamless connection of up to 10 luminaires in a line
- Handy switch directly installed on the luminaire
- Low flicker light thanks to special electronic control gear
- Flexible installation in 2 different angles with 2 different mounting options
- Flexible application due to a wide range of available lengths of 300 to 1500 mm.
- Angled connection possible with included cable

### Product features

- Built-in switch
- Up to 10 luminaires connectable



- Translucent end caps
- Versions with luminous flux 400...1900 lm available
- 5 different lengths available
- High luminous efficacy: up to 112 lm/W
- Glow Wire Test according to IEC 60695-2-12: 850 °C

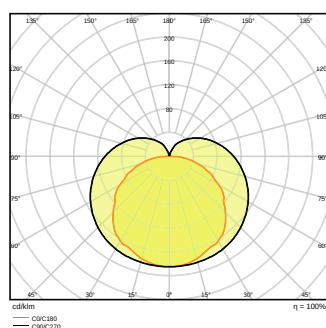
## TECHNICAL DATA

### Electrical data

Nominal wattage	4.00 W
Nominal voltage	220...240 V
Mains frequency	50...60 Hz
Nominal current	0.03 A
Inrush current	15 A
Inrush current time $T_{H50}$	150 $\mu$ s
Max. no. of lum. on circuit break. B16 A	40
Max. no. of lum. on circuit break. C10 A	32
Max. no. of lum. on circuit break. C16 A	51
Power factor $\lambda$	> 0.5
Total harmonic distortion	88 %
Protection class	II

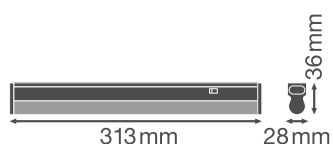
### Photometrical data

Luminous flux	450 lm
Luminous efficacy	110 lm/W
Color temperature	4000 K
Light color (designation)	Cool White
Color rendering index Ra	> 80
Standard deviation of color matching	< 5 sdcn
Low flicker	Yes
Photobiological safety group acc. to EN62778	RG0
Beam angle	140 °



## Dimensions & Weight

Length	313.00 mm
Width	28.00 mm
Height	36.00 mm
Product weight	119.00 g



## Materials & Colors

Product color	White
Housing color	White
Body material	Polycarbonate (PC)
Cover material	Polycarbonate (PC)
Light emitting surface material	Polycarbonate (PC)
Glow Wire Test according to IEC 60695-2-12	850 °C
Mercury content	0.0 mg

## Application & Mounting

Ambient temperature range	-20...+40 °C
Type of connection	Screw terminal, 2-Pole (L,N)
Type of protection	IP20
Protection class IK (shock resistance)	IK03
Dimmable	No
Mounting type	Surface
Mounting location	Ceiling / Wall
LED module replaceable	Not replaceable

## Lifespan

Lifespan L70/B50 at 25 °C	50000 h
Lifespan L80/B10 at 25 °C	40000 h
Lifespan L90/B10 at 25 °C	30000 h

Number of switching cycles	100000
----------------------------	--------












## Certificates & Standards

Standards	CE / CB / TÜV SÜD / EAC
Luminaire with limited surface temperature, "D sign"	No
Ball shot safe	No

## EQUIPMENT / ACCESSORIES

- Equipped with power plug, cable connector and line adapter for connecting further luminaires
- Mounting material for wall and ceiling installations included

## DOWNLOAD DATA

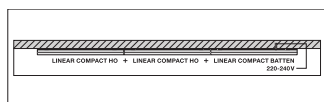
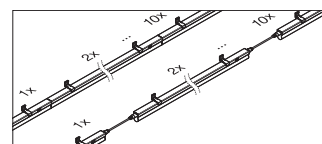
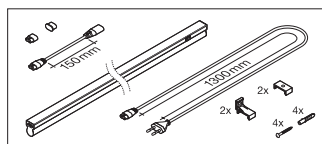
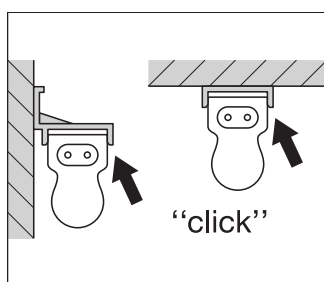
DOWNLOAD DATA	
	User instruction UI_Linear_Compact_Switch
	Tender documents Tender Text 4058075106093
	Declarations of conformity EU Declaration of Conformity Linear Comp Switch and HO LEDV
	Declarations of conformity Attestation of Conformity Linear Comp
	On-Pack-Info Legal Insert Linear Compact
	IES file (IES) LN COMP SWITCH 300 4W 4000K 230V IP20
	LDT file (Eulumdat) LN COMP SWITCH 300 4W 4000K 230V IP20
	R3D file (Relux 3D Model) Linear Compact Batten 300
	M3D file (3D Model) Linear_Compact_Batten_300
	ULD file (DIALux) LINEARCOMPACTSWITCH3004W4000K
	UGR file (UGR table) LN COMP SWITCH 300 4W 4000K 230V IP20

## LOGISTICAL DATA

Product code	Packaging unit (Pieces/Unit)	Dimensions (length x width x height)	Gross weight	Volume
4058075106093	Folding box 1	42 mm x 29 mm x 580 mm	167.00 g	0.71 dm <sup>3</sup>
4058075106109	Shipping box 25	558 mm x 223 mm x 180 mm	6154.00 g	22.40 dm <sup>3</sup>

The mentioned product code describes the smallest quantity unit which can be ordered. One shipping unit can contain one or more single products. When placing an order, for the quantity please enter single or multiples of a shipping unit.

## ADDITIONAL CATALOG INFORMATION



## References / Links

– For Guarantee see [www.ledvance.com/guarantee](http://www.ledvance.com/guarantee)

## DISCLAIMER

Subject to change without notice. Errors and omission excepted. Always make sure to use the most recent release.